

4800 WASHINGTON ST DENVER, CO 80216

CLOSE PROXIMITY TO I-70



ABOUT 4800 WASHINGTON

- Corner location adjacent to S Platte River
- Great multi-use opportunity
- Highly customizable space
- 10 min. from Downtown Denver
- Situated in historic Globeville, just north of the RiNo Art District
- Blocks from I-25 & 1-70 interchange
- Neighborhood is experiencing ample growth

LEASE RATE: \$6-\$18 / SF NNN

NO WARRANTY OR REPRESENTATION, EXPRESS OR IMPLIED, IS MADE AS TO THE ACCURACY OF THE INFORMATION CONTAINED HEREIN, AND THE SAME IS SUBMITTED SUBJECT TO ERRORS, OMISSIONS, CHANGE OF PRICE, RENTAL OR OTHER CONDITIONS, PRIOR SALE, LEASE OR FINANCING, OR WITHDRAWAL WITHOUT NOTICE, AND OF ANY SPECIAL LISTING CONDITIONS IMPOSED BY OUR PRINCIPALS NO WARRANTIES OR REPRESENTATIONS ARE MADE AS TO THE CONDITION OF THE PROPERTY OR ANY HAZARDS CONTAINED THEREIN ARE ANY TO BE IMPLIED.



PROPERTY FACTS

RENTABLE AREA	1,000-20,000 SF
BUILDING SIZE	119,674 SF
FLOOR SIZE	66,282 SF
LOT SIZE	+/- 3.5 Acres
FLOORS	2

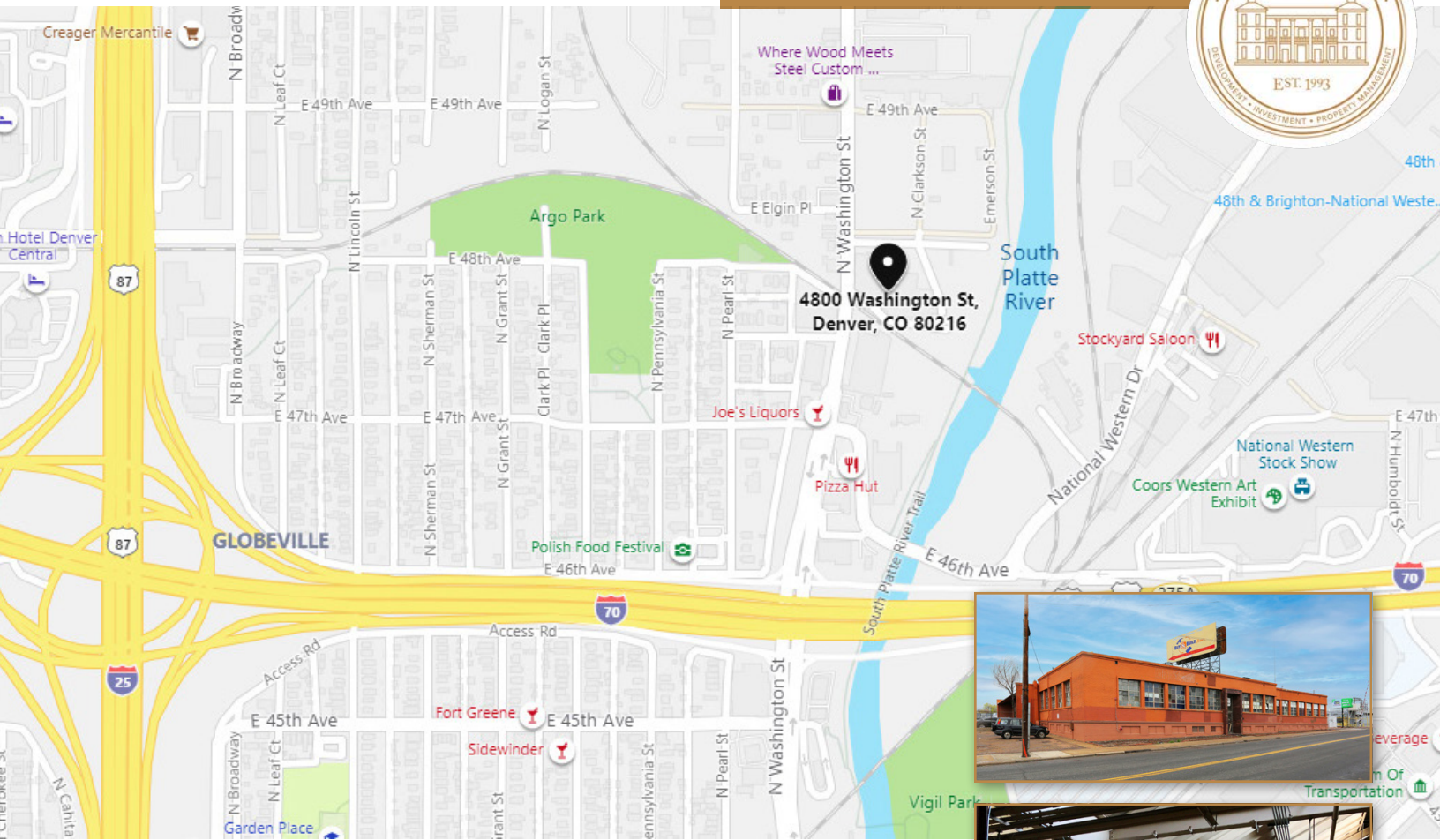
FOR MORE INFORMATION:

DAVID LEUTHOLD

C: 303.520.7729

dleuthold@stcharlestown.com

stcharlestown.com



20,000 SF FLOOR PLAN
Ground Floor Storage

Not Available



FOR MORE INFORMATION:
DAVID LEUTHOLD
C: 303.520.7729
dleuthold@stcharlestown.com
stcharlestown.com